

Ontario Association of Landscape Architects

There are 636 full members and 15 emeritus and honorary members of OALA.

In 1997, OALA developed a strategic plan which provides a framework for how resources will be spent and will guide OALA for the next 3 years. There are 4 key pursuits: 1)Broaden the awareness of landscape architecture; 2)Affirm the value of OALA membership; 3)Make the OALA more inclusive; 4)Advocate landscape architecture education programs.

OALA has been involved with CLARB and the LARE for 4 years and 23 new members have been admitted through this process. OALA finalized its Membership Candidacy Options document which is now a guide for the Examining Board in evaluating applicants. It also provides a mechanism for dealing with reciprocity candidates and will incorporate the use of the new CLARB Reciprocity Validation Examination for seasoned practitioners.

OALA has struck an Education Task Force with a vision statement for landscape architecture education. OALA sent a letter of support for the University of Guelph program which is under review and OALA will be reassessing the curricula of Ontario landscape architecture schools.

OALA has received a legal opinion stating that the Ontario Building Code, related regulations, or any other legislation or regulation in no way pre-empts landscape architects from preparing grading or site plans. This is being used successfully to secure municipal compliance of recognition of landscape architects and qualified consultants in certain cases. OALA has become an affiliate of the Consulting Engineers of Ontario (CEO) which has considerable influence with the Provincial government and which will give OALA direct participation on CEO-government liaison committees. We have secured a position on the MNR/CEO Liaison Committee and a design review committee for Provincial highway landscape advertising.

A media campaign was orchestrated during the summer and fall and focused on OALA's views about healthy urban cores. The eight principles are: 1)A recognition that Ontario cities are a collection of livable neighborhoods; 2)A commitment to livable downtown cores with advice from neighborhood committees; 3)The importance of urban cores as the economic, social and cultural engines of cities; 4)Support of innovative downtown development and redevelopment initiatives; 5)Tax incentives which support downtown areas; 6)Planning policies which discourage urban sprawl; 7)A mix of uses to ensure street activity and active public spaces; 8)Networks

of public space linked with natural features and ensuring dedicated green space.

OALA has published 2 new brochures and a membership directory, has leased new, state-of-the-art computer equipment and has established a new web site at oala.on.ca. OALA's email address is oala@interlog.com

Manitoba Association of Landscape Architects

There are 37 full members, 1 life member and 7 honorary members of MALA.

Discussions with the Association of Professional Engineers of Manitoba (APEM) continue. We have developed a Memorandum of Understanding between MALA and APEM which acknowledges each other's profession, education and the joint need to protect the public good. We propose a joint committee to broaden the understanding of each other's profession with the intent to ensure the holistic development and management of our land and water environments in both rural and urban settings.

Name Act legislation is moving forward and is expected to be presented to the legislature in the spring of 1998.

The MALA web site is being developed and will offer services to both the membership and the public. It should be available for use by February, 1998.

The "MALA News" is serving as a vehicle of communication among the 3 prairie provinces and is being distributed to members of AALA and SALA. These associations are also invited to submit articles and items of interest.

MALA has a new address: 131 Callum Cres., Winnipeg, MB. R2G 2C7 and can be reached at: tel: 204-663-4863; fax: 204-668-5662.

Saskatchewan Association of Landscape Architects

There are 17 full members and 3 honorary members of SALA.

SALA is reviewing membership requirements in the context of potential reciprocity and legislation. SALA presented two, \$500.00 academic awards to landscape architecture students - one at the University of Guelph; and one at the University of Manitoba.

SALA hosted a reception at which the CSLA

of the anticipated costs of registration.

Community Service Award and Professional Awards were presented. The CSLA Professional Award panels are currently on display in various venues in the province.

Alberta Association of Landscape Architects

The Alberta Association of Landscape Architects will certainly remember 1997. Although membership in our association dropped in 1997, everyone experienced a very busy 12 months and we anticipate some growth over the next few years. Participation in association activities was very high and our Executive Council was successful in completing many changes to how our association is governed and represented.

Our CSLA representative is now an elected position with a two year term. Previously, our past-president participated on the CSLA Board of Governors for a one year term.

Our membership was invited to submit their ideas and concerns on the practice of offering design/build services in order to prepare guidelines for members who chose to pursue such ventures.

Our membership requirements and regulations are being revised to incorporate the national internship program for traditional landscape architectural graduates and a mentorship program for non-traditional educational or professional experience candidates.

The AALA, MALA and SALA are exploring the concept of jointly publishing a quarterly newsletter.

The AALA is also updating its professional fee schedule for ratification by the membership in April, 1998.

The AALA is preparing for submission of an application for title protection under POARA (the professions and occupations association registration act) in 1998.

After 2 years of preparation, many meetings, telephone calls, e-mails and letters, the AALA successfully hosted CSLA/AAPC Congress '97 in Edmonton. The August Congress also brought the Board of Governors, the Council of Educators and the International Alliance of Landscape Architects for several days of meetings. The effort contributed by the members of the AALA resulted in the Congress realizing a profit of \$21,000. Ten percent of this profit went into the CSLA account (by agreement) and \$3,000 was donated to the Landscape Architecture Canada Foundation to promote further research in Landscape Architecture in Canada. The balance will be invested in the profession in Alberta through educational and promotional initiatives and by covering some



Andre Schwabenbauer, AALA presents Cecelia Paine of the Landscape Architecture Canada Foundation with a cheque for \$3,000.00

Northwest Territories Association of Landscape Architects

There are 7 full members of the NWTALA. Paul Erikson, our newest member lives in Rankin Inlet and is the only registered landscape architect working in the soon-to-be-proclaimed Nunavut Territory.

NWTALA continues to work with the NWT architects to ensure that any new legislation proposed by them does not limit or constrain work opportunities for landscape architects. We are approaching agreement on this subject.

The individual members in both government and private practice are directing their energies toward sustaining the profession in an economically-challenged region. A new direction will emerge in 1998 and we will be there to be a part of it.

**British Columbia Society of
Landscape Architects**

There are 190 full members and 8 honorary members of BCSLA. 13 new members were received in 1997 - 1 was received by reciprocity as they were CLARB certified. BCSLA is active in CLARB and Gerry Eckford was elected to the CLARB executive as the Region V Director. A written Reciprocity Validation Examination has now replaced the previous oral seniors examination. This exam is intended to recognize individuals with significant experience who are seeking CLARB certification.

In February 1998. The BCSLA Professional Practice Handbook will be completed. By March 1998, the BCSLA web sites will be available and will be used to inform members and the public of issues and events connected with the BCSLA.

The BCSLA Board of Directors has endorsed the effort of the School of Horticulture, Kwantlen University College, to explore the establishment of a new Bachelor Degree in Landscape Technology. Initial thoughts on this initiative would see a program that focuses on Landscape Design and Environmental Protection Enhancement Technology.

BCSLA will host the CSLA Congress 2000 in Vancouver.



Attendees at Congress 98 enjoy Mayor Bourque's address

LETTERS

RE: ORAL HISTORY PROJECT

I wish to compliment Linda Le Geyt and the Canadian Society of Landscape Architects on the effort and energy in producing this valuable history publication, in its first volume. I would hope to see this process continue with more volumes being added to the series.

Realizing that it was necessary to keep each entry brief, there are some important things that I would like to add. First, none of the major projects would have been realized without the full confidence, guidance and support of my mentors: Otis 'Bish' Bishopric, Gordon Scott, Jack Herbert, Jack Nicol and Ron Malis of Parks Canada; Don Pettit with the National Capital Commission; and Vic Chanasyk at the University of Guelph, who incidently, was a partner in the Parc de Gaspé project in Quebec. Second, the excellent collaboration of my peers and co-workers who were very capable in bringing to completion complex projects, was very important. Such experienced professionals as Ed Holubowich, Peter Coe, Murray Allen, Art Luscombe, Murray Outhet, Allan Fraser, Reg MacDonald, Gerry McGrath and other gave valuable contributions to the success of the projects.

Also, I wish to point out that the 'Project Chart' does not express the true picture of my involvement. As Principal of the firm, I had some involvement in all of the projects. However; the critical part of the work was carried out by the staff person who managed, organized, planned, designed and saw the project of completion. On larger projects he or she was the team captain with a number of disciplines involved. Some of the many excellent professionals I have had the privilege to be associated with were: Murray Allen, Walter Johnstone, Jugh Knowles, Louise MacKenzie, Glen Norton, Noreen Chibuk, Linda Irvine, Faye and Hugh Harwell, Randy Hollingworth, Brian Baker, Bill McMillan and others.

Of course, none of this work could have been accomplished without the client whose dreams in some small way we brought to reality. Thank you for the memories!

Roman Fodchuk

COMPONENT ASSOCIATION REPORTS

**Newfoundland & Labrador Association of
Landscape Architects**

We now have 8 full members, 1 student member and 1 life member, Philip Hicks. Increasing the membership of NALA has been identified as an important undertaking of our Association.

Neil Dawe has been the Board of Governors' representative; Gerhard Weiland will take over in March, 1998. NALA has had a fee increase from \$160.00 per annum in 1996 to \$260.00 in 1998.

An on-going effort is the establishment of a Name Act. Currently we are working with the provincial architect's association to determine the feasibility of revising their act to include landscape architects. Similar discussions have also begun with the engineer's association.

Many NALA initiatives are concerned with raising the profile of the profession in the province. Some of these include: Tidy Towns Judging, publication efforts, developing a web page and designing a poster for display at environmental and landscape events in the province.

**Atlantic Provinces Association of Landscape
Architects**

There are currently 27 full members and 1 life member of APALA.

We have been very active with lobbying efforts with respect to our proposed Name Act legislation. The Act is planned for presentation to the House in the spring of 1998. The Act complies with current regulations established under NAFTA and will represent a benchmark for professional legislation in Atlantic Canada.

The Nova Scotia Association of Professional Engineers (APENS) is developing a new practice act which strives to include environmental management and site development. Once the title act for APALA has been recognized, we will negotiate a joint practice agreement with APENS.

The Nova Scotia Environmental Industry Association and their national body held a series of workshops on certification needs for environmental products and services in Canada. The environmental industry associations are concerned over government-led initiatives to establish certification standards and process relating to

professional services. Recommendations for the workshops are currently being studied.

APALA has a history of offering reciprocity to members of component associations and will continue to recognize the credentials of fellow CSLA members and to meet the principles of the CSLA policy.

APALA is pleased to have Mr. Cary Vollick made a member of the CSLA College of Fellows.

**Association des architectes paysagistes
du Quebec**

No report available.

Montreal Mayor, and Landscape Architect, Pierre Bourque addresses the gathering at Congress 98 recently held in Montreal.



MESSAGE FROM THE EXECUTIVE DIRECTOR

The publishing of this issue of the CSLA Buletin provides me with an opportunity to introduce myself as the new CSLA Executive Director. Over the next few months, I hope to have the opportunity to meet many of you in person. In the interim, following is a brief summary of my professional background as well as some personal info to allow you to get to know me.

I am married to a retired RCMP officer, have three grown children and one grandchild. We have lived in the Ottawa area since 1973, but have also lived in Quebec (where I grew up) and Saskatchewan. I am bilingual and since 1976 have worked in various capacities in non-profit associations, most recently in senior administrative and managerial positions. I am confident that this experience, along with my experience as a senior volunteer of a non-profit association, will assist me in developing the CSLA into a stronger organization with a higher national profile. Another factor which will make this possible is my being hired as a full-time employee. I want to acknowledge the incredible contribution that Larry Paterson and Linda LeGeyt have made to the CSLA. In going through all of the material they have sent me, it is obvious they have left a "house in good order" and accomplished a great deal given the part-time nature of the position. Thank you both for all the support you have given me as I settle into the position.

Some of the immediate priorities I will be focusing on are as follows:

1. Development of our web site to provide optimum access to issues of importance to all of you, as well as access to bidding processes.
2. Review of membership services and ways in which these can be enhanced.
3. The accreditation process.
4. The process for CSLA awards.
5. How we communicate with our members.

I would welcome input from all of you on issues of concern. My immediate challenge is learning as much as I can about the profession and I look forward to your support in this regard. The strength of any organization lies in its membership and I welcome your thoughts, both positive and negative, on how we can make CSLA stronger. Please don't hesitate to contact me. We have retained the Ottawa Post Office address or you can reach me more quickly by addressing mail to my home address where the CSLA office is physically located. Both addresses are shown on the inside front cover of this publication.

I urge you to visit our Web Site at www.csla.org and would also welcome any comments on the site as well as suggestions you may have for items that you would like to see included.

I look forward to meeting all of you and in the meantime, hope we will be in touch in other ways.

Sharon Mousseau,
Executive Director

David Mitchell, Sharon Mousseau & David Wagner at a recent Ottawa Meeting of the Board of Governors



1997 CSLA/AAPC STATEMENT OF OPERATIONS

| REVENUE | Budget | Actual |
|--------------------------------------|------------------|------------------|
| Member dues | \$125,000 | \$121,760 |
| Canada Council Grant | 0 | 7,500 |
| Awards | 8,000 | 585 |
| Bank Interest | 1,500 | 1,744 |
| Bulletin Sponsorship | 2,500 | 0 |
| Changing the Face of Canada - Vols 1 | 0 | 2,512 |
| Brochures | 500 | 144 |
| Congress 95 | 5,000 | 5,482 |
| Accreditation | 5,000 | 7,340 |
| Other | 3,000 | 500 |
| Reserve | 2,000 | 0 |
| Total | \$152,500 | \$147,567 |

PROGRAM 1 - ADMINISTRATION

| | | |
|-----------------------------------|---------------|---------------|
| Executive Director | \$ 30,000 | 30,000 |
| Office Assistance | 15,000 | 15,000 |
| Office Equipment, expenses, space | 20,000 | 19,327 |
| Budget | 0 | 0 |
| Three Year Plan Program review | 0 | 0 |
| Operating Manual | 0 | 0 |
| By-Laws | 0 | 0 |
| Internal Policies | 0 | 0 |
| Insurance | 1,000 | 1,000 |
| Total | 66,000 | 65,237 |

PROGRAM 2 - AWARDS & RECOGNITION

| | | |
|-------------------------------------|--------------|--------------|
| Pins, Certificates & Student Awards | 500 | 0 |
| Life & Honourary Membership | 250 | 0 |
| College of Fellows | 300 | 587 |
| Professional Awards | 8,000 | 4,271 |
| Student Competition | 500 | 0 |
| Other awards | 0 | 907 |
| Total | 9,550 | 5,765 |

PROGRAM 3 - EDUCATION

| | | |
|--------------------------------|---------------|--------------|
| Accreditation Council | 3,000 | 0 |
| U of Montreal Team | 5,000 | 0 |
| Accreditation training | 2,000 | 1,127 |
| Continuing Education | 2,000 | 1,202 |
| LA Canada Foundation | 2,000 | |
| Canada Council on LA Education | 0 | |
| Changing the Face of Canada | 0 | 7,250 |
| Total | 14,000 | 9,579 |

PROGRAM 4 - NATIONAL ACTIVITIES

| | | |
|------------------------|--------------|------------|
| Outsourcing | 500 | 85 |
| Exchange program | 0 | 598 |
| Reciprocity task force | 1,000 | |
| Self Regulation | 3,000 | 53 |
| Total | 4,500 | 736 |

| PROGRAM 5 - INTERNATIONAL | Budget | Actual |
|---------------------------|------------|----------|
| Program review | 200 | 0 |
| Formal Affiliations | 200 | 0 |
| Information Exchange | 200 | 0 |
| Total | 600 | 0 |

PROGRAM 6 - COMMUNICATION

| | | |
|------------------------------|---------------|---------------|
| Congresses | 150 | 5,353 |
| Bulletin & Annual Report | 18,000 | 6,729 |
| Roster and Handbook | 3,000 | 4,492 |
| Internet | 3,000 | 299 |
| New LA publication | 1,000 | 0 |
| Student Liaison | 2,000 | 2,035 |
| Translation | 4,000 | 2,895 |
| Executive Committee Meetings | 2,500 | 3,410 |
| Board of Governors Meetings | 8,000 | 14,059 |
| Board of Governors subsidy | 2,500 | 2,383 |
| Annual Meeting | 200 | 340 |
| Elections | 1,000 | 85 |
| Total | 65,700 | 42,079 |

PROGRAM 7 - PUBLIC RELATIONS & PROMOTION

| | | |
|--------------------------|---------------|---------------|
| Program Review | 2,000 | 2,104 |
| Design Alliance | 1,000 | 1,000 |
| Community Service Grants | 2,000 | 1,875 |
| Ambassadorial Program | 1,500 | 0 |
| Allied Professions | 1,000 | 0 |
| Promotional Materials | 5,000 | 7,205 |
| Magazines | 0 | 0 |
| Total | 12,184 | 12,500 |

TOTAL PROGRAMS 1 - 7 \$ 135,580

Excess Revenue over Expenses \$11,987

Note:

The information provided herein is a summary of the financial statements provided by the accounting firm of Haag Robinson, Calgary, Alberta. At the Board of Governors Meeting held in Ottawa in November, the excess revenue was allocated to a variety of projects including Changing the Face of Canada - Volume 2, the brochure and the National Publication.

1998 CSLA/AAPC PROGRAM BUDGET

The Budget which follows was approved by the Board of Governors at the November 1997 Meeting held in Ottawa.

REVENUE

| | |
|--|-------------------|
| Member dues | \$ 125,000 |
| Awards | 8,000 |
| bank Interest | 1,500 |
| Bulletin Sponsorship | 2,500 |
| Changing the Face of Canada - Vols 1&2 | 3,000 |
| Brochures | 500 |
| Congress | 5,000 |
| Roster & Annual Report | 2,500 |
| Other | 3,000 |
| Total | \$ 151,000 |
| from Reserves | 15,000 |
| Total Budget | \$ 166,000 |

PROGRAM 1 - ADMINISTRATION

| | |
|---|------------------|
| Executive Director | \$ 45,000 |
| Office Equipment, expenses, space | 25,000 |
| Budget | |
| Three Year Plan Program review | |
| Operating Manual | |
| Transition Expenses | 3,500 |
| By-Laws | |
| Internal Policies | |
| Insurance | 1,000 |
| Total | \$ 74,500 |

PROGRAM 2 - AWARDS & RECOGNITION

| | |
|---|-----------------|
| Pins, Certificates & Student Awards | \$ 750 |
| Life & Honourary Membership | 250 |
| College of Fellows | 300 |
| Professional Awards | 8,000 |
| Student Competition | 500 |
| Total | \$ 9,800 |

PROGRAM 3 - EDUCATION

| | |
|--------------------------------------|-----------------|
| Continuing Education | \$ 2,000 |
| Canada Council on LA Education | 1,000 |
| Total | \$ 3,000 |

PROGRAM 4 - NATIONAL ACTIVITIES

| | |
|----------------------------|-----------------|
| National Initiatives | \$ 1,000 |
| Reciprocity | |
| Total | \$ 1,000 |

PROGRAM 5 - INTERNATIONAL ACTIVITIES

| | |
|--|-----------------|
| Ongoing International Affiliations | \$ 1,000 |
| Total | \$ 1,000 |

PROGRAM 6 - COMMUNICATION

| | |
|------------------------------------|------------------|
| Conference 98 - Montreal | \$ 5,000 |
| Conference 99 - Ottawa | |
| Conference 2000 - BC | |
| Conference 2001 - Montreal | |
| Bulletin | 4,000 |
| Roster and Annual Report | 7,500 |
| Internet | 2,000 |
| Student Liaison | 2,000 |
| Translation | 4,000 |
| Executive Committee Meetings | 4,500 |
| Board Of Governors Meetings | 8,000 |
| Board of Governors subsidy | 2,500 |
| Annual Meeting | 200 |
| Elections | 1,000 |
| National Publication | 25,000 |
| Total | \$ 65,700 |

PROGRAM 7 - PUBLIC RELATIONS & PROMOTION

| | |
|---|------------------|
| Program Review | \$ 2,000 |
| Communities-In-Bloom | 2,000 |
| Promotional Materials | 4,000 |
| Changing the Face of Canada, Volume 2 | 3,000 |
| Total | \$ 11,000 |

TOTAL PROGRAMS 1 - 7 **\$ 166,000**

PROGRAM 8 - ACCREDITATION

Note: This program is separately funded by University Accreditation fees and managed by the CSLA Accreditation Council.

| | |
|------------------------------|-------------------------|
| Revenue | \$ 3,000 |
| Expenses | |
| Accreditation Council | 3,000 |
| Visiting Team | 5,000 |
| Accreditation training | To be determined |
| Total | To be Determined |



PRESIDENTS' MESSAGE

David Wagner

A great deal of work has been accomplished by the CSLA since the last Bulletin. Preparations are all but complete for the up coming Congress 98 in Montreal and I would like to express my thanks to the AAPC/CSLA members who have volunteered their time and efforts to bring the Congress to reality.

Sharon Mousseau has "weathered" the ice storm and assumed the role of the Executive Director. The Society office is now fully bi-lingual. Sharon can be reached at our continuing snail mail address or more quickly via our WEB site, aapc.ca or csla.ca.

The WEB site has taken on a whole new look and is being actively managed. Check out the "Awards" button, our latest improvement. The French language side of the site has been sent for translation and the "under construction" should soon be complete. Component Associations are encouraged to "link up".

Our Accreditation Committee has made significant progress and visits to the Universities of Montreal and Guelph are scheduled. The National Publication Committee, given the committed financial support of the CSLA and anxiously anticipated support of the Component Associations intends to publish the Landscape/Paysagistes journal in the fall.

Having noted some of our accomplishments, much remains to be done. A major agenda item that needs to be addressed is membership requirements. I believe that a significant number of people, who presently choose not to be Component Members, would join the CSLA if Associate and Student categories existed. Let the office and Board know how you feel about this issue or any other issue you care to raise, in person at Congress 98 or via mail.

I welcome questions and comments and can be reached in-directly via e-mail, csla.ca or directly via e-mail, dwa@magic.ca



PRESIDENT ELECT'S MESSAGE

David Mitchell

The Spring of 1998 brings with it changes to the CSLA executive. Larry Paterson has retired from his role as Executive Director to return to full time private practice. I personally thank Larry and Linda for the enormous contribution they have made to the CSLA. Their knowledge and dedication to the profession has helped a succession of Presidents and individual board members to be successful. Sharon Mousseau, the new Executive Director, has a difficult act to follow. She is a fast study, however, and is quickly making her presence felt. The EXCOM, the BOG and the Executive Director all feel the responsibility that comes with this change.

The CSLA now has full time (almost) staff with an office in Ottawa. We must continue services at an ever expanding level.

The proposed new national publication will help provide some of the necessary services, but it can't succeed without support from across the country. We will require financial support by subscription, advertising and even more importantly, contribution of material suitable for publication on an ongoing basis. The publication can only succeed if it achieves a continued vitality from broad participation from all categories of the membership.

The BOG will be updating the 3 year plan in the months ahead. If you have opinions regarding the organization and the goals of the CSLA, now is the time to voice them. We will be establishing priorities that will direct the CSLA for the next several years, and I for one, will be interested in feed back from the membership.

Can the CSLA evolve to serve the expanding role of Landscape Architects without abandoning the traditional model? Can we finally achieve reciprocal agreements and uniform national standards of membership requirements between components?

Get involved and keep in touch.

**CSLA /AAPC
BOARD OF GOVERNORS / CONSEIL DES GOUVERNEURS
1998**

EXECUTIVE COMMITTEE / COMITÉ DE DIRECTION

David Wagner, President
David Wagner & Associates
430 River Avenue, #4
Winnipeg, MB R3L 0C6
Tel: 204-452-2426
Fax: 204-477-0968
E-mail: dwa@escape.ca

David Mitchell, President-Elect
DMG Landscape Architects
8176 Gray Ave.
Burnaby, B.C. V5J 4A1
Tel: 604-437-3942
Fax: 604-437-8723
E-mail: dmg_landscape@bc.sympatico

Sharon Mousseau, Exec. Director
CSLA/AAPC
P.O. Box 870, Stn. 'B'
Ottawa, ON. K1P 5P9
OR
286 Brunton Side Road, RR 6
Smiths Falls, ON. K7A 4S7
Tel: 613-253-4938
Fax: 613-253-5585
E-Mail: csla@escape.ca

GOVERNORS / GOUVERNEURS

Allan Neufeld, BCSLA
2828 - 208 Street
Langley, B.C. V2Z 2C3
Tel: 604-533-6085
Fax: 604-533-6131
Email: neufelaw@township.
langley.bc.ca

Robert Crosby, SALA
Hilderman Witty Crosby Hanna 504
Queen Street
Saskatoon, SK. S7K 0M5
Tel: 306-665-3441
Fax: 306-652-9613
Email: crosbyhanna@getthe.net

Vincent Asselin, AAPQ
1013 rue Prud'Homme
Montreal, QC. H4A 3G9
Tel: 514-939-2106
Fax: 514-939-2107
Email: waa-ap@sympatico.ca

Andre Schwabenbauer, AALA
10020 - 101A Ave., #210
Edmonton, AB. T5J 3G2
Tel: 403-421-8616
Fax: 403-425-7408
Email: srla@oanet.com

Derek Murray, MALA
Winnipeg Parks & Recreation
2799 Roblin Boulevard
Winnipeg, MB. R3R 0B8
Tel: 204-986-7436
Fax: 204-986-6784
Email: dmurray1@citygw.city.
winnipeg.mb.ca

Cary Vollick, APALA
R.L. Petersmann Landscape
Architects
2030 Gottingen Street, #200
Halifax, NS. B3K 3A9
Tel: 902-422-6514
Fax: 902-425-0402
Email: rlpla@mail.kayhay.com

John Laird, NWTALA
Sub P.O. #1
Yellowknife, NT. X1A 2S9
Tel: 867-873-6980
Fax: 867-873-3762
Email: jlaird@internorth.com

David Anselmi, OALA
PMA Landscape Architects
2842 Bloor Street West, #201
Etobicoke, ON. M8X 1B1
Tel: 416-239-9818
Fax: 416-239-1310
Email: pma@interlog.com

Neil Dawe, NALA
P.O. Box 125
Kelligrews, NF. A0A 2T0
Tel: 709-737-1077
Fax: 709-737-1014
Email: ndawe@morgan.uacs.mun.ca

BULLETIN BOARD

UPCOMING EVENTS

July 19-25, 1998 • Florence, Italy
VII International Congress of Ecology, "New tasks for ecologists after Rio 1992". Contact: Almo Farina, fax: 39-187-420727; email: afarina@tamnet.it

September 6-13, 1998 • Prague, Czech Republic
International Association of Landscape Ecology " Present and Historical Nature-Culture Interactions in Landscapes"
Email: cle98@prfdec.natur.cuni.cz

September 28 - 30, 1998 • Toronto, Ontario
"Reclamation and Restoration of Settled Landscapes"
Jointly sponsored by the Canadian Land Reclamation Assoc. And the Society for Ecological Restoration. Information available from Environment and Resource Studies Program, Trent University, Peterborough, ON., Fax: 705-748-1634, email: ser_ont@trentu.ca

1998 • 35th IFLA World Congress in Jakarta, Indonesia.
Theme: Landscape Architecture, Quest for the 21st Century: Responsibilities, Challenges and Opportunities.
Contact: IFLA Secretariat, 4 rue Hardy, RP no 914, 78009 Versailles Cedex, France or via IFLA secretary General, Heiner Rodel, Switzerland, Fax ++41-91-966-7261

October 3-5, 1998 • 1998 ASLA Annual Meeting and Convention - Portland, Orgeon. Contact ASLA at Fax: 202-898-1185; internet: <http://www.asla.org>

November 12-14, 1998 • 16th Annual International Conference on Urban Waterfront Planning, Development & Culture: Royal York Hotel, Toronto, Ontario

March 24-26, 1999 • Pan- Amercian Environmental Technology Trade Showe and Conference, Montreal, Quebec. Visit the Web Site www.americana.org

June 23-25, 1999 • 36th IFLA World Congress in Copenhagen, Denmark. Information available from The Assoc of Danish Landscape Architects, Hauser Plad 32, 3. DK-1127 Copenhagen K, Denmark. Fax: +45-33-91-36-26.

OF INTEREST

Waterfront Annual International Awards Competition:
Open to completed waterfront projects, comprehensive plans and citizens efforts. Call the Waterfront Center to be placed on list to receive entry forms. Entries consist of a short narrative and up to 20 35mm slides plus backup materials contained in a three ring binder. Entries must be post marked by Sept 11, 1998, winners announced Nov. 13, 1998. Tel: 202-337-0356; fax: 202-625-1654

Changing the Face of Canada - Volume 1: Volume 1 of this precedent setting work is nearly sold out. If you wish to have a copy, please order immediately. Price is \$24.95 payable to the CSLA/AAPC. The Premier Edition of the book signed and numbered by the author, Linda LeGeyt is available from Box 7, Site 5, R.R.#1, Okotoks, AB. T0L 1T0

Changing the Face of Canada - Volume 2: The second volume of this outstanding record of Canadian Landscape Architects is nearing completion and will be available in the very near future. Order your copy now to ensure delivery. The price \$24.95 including postage. Payable to the CSLA/AAPC. Order from the CSLA office.

IFLA is now on the internet - check them out at:
<http://www.kee.hu/eng/szov/ifla/index.htm>

1998 LACF Grants

The Landscape Architecture Canada Foundation (LACF) is pleased to announce its 1998 grants program. This year, grants in the amount of \$500 - \$2500 are available for research, communication and scholarship activities. Proposals will be evaluated based on criteria set forth by the LACF Grants Committee. Submissions are due no later than Friday October 2, 1998.

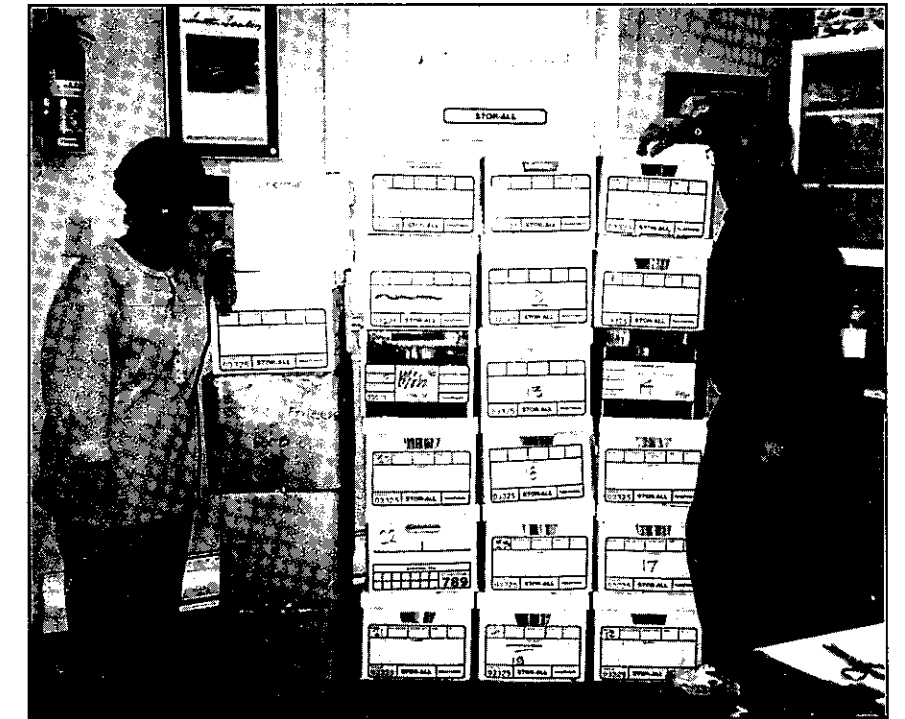
For further information contact:
Cecelia Paine, FCSLA
Grants Committee Chair
16 Tipperary Place
Guelph, Ontario, N1H 2A3
Fax: 519-763-9573
Email: cpaine@la.uoguelph.ca

BULLETIN & 1997 ANNUAL REPORT

Spring 1998

During the latter part of 1997, The CSLA/AAPC, executive took a major step forward on behalf of the membership and hired a full time, bi-lingual Executive Director to be located in an office of the society nearer Ottawa. In this the last issue of the Bulletin to be produced from the wild west, you will be introduced to the new Executive Director, Ms. Sharon Mousseau and you will be provided with an overview of the societies activities during 1997 and the budget & program priorities for 1998.

Throughout December, the staff at the Okotoks, Alberta office of the CSLA/AAPC began packing and preparing for a move of the office to new quarters in Smith Falls Ontario, near Ottawa. Data accumulated over many years was sorted and boxed with the intent that it can eventually be filed in the National Archives of Canada, thereby making it available for all members of the public who may be interested in researching landscape architecture. A total of 24 boxes of "stuff" were shipped to Ottawa via the Greyhound.



Linda LeGeyt and Larry Paterson in the CSLA/AAPC office with the 24 boxes of society information being made ready for the transfer to new society headquarters near Ottawa.

The Canadian Society
of
Landscape Architects

L'Association des
Architectes Paysagistes
du Canada



The Canadian Society of
Landscape Architects

P.O. Box 870, Station 'B'
Ottawa, ON K1P 5P9



L'Association des Architectes
Paysagistes du Canada

C.P. 870, Succursale 'B'
Ottawa, ON K1P 5P9

